

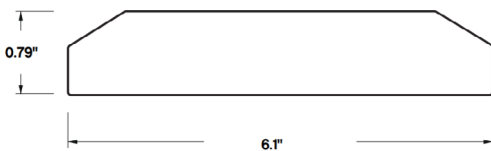
PROJECT NAME:	DATE:	TYPE:
SPECIFIER:	PREPARED BY:	
PART NO.:		



# LED POWER SUPPLIES

TBD.PSDT (20W, 40W, 60W - 12V, 24V)

## REMOTE TRIAC DIMMING DRIVER



TBD.PSDT for use with DC LED systems, using TRIAC, forward-phase, ELV style dimmers. Derated to allow for maximum capacity loads, and integrated technology ensures over-current protection. Suitable for residential or commercial indoor use.

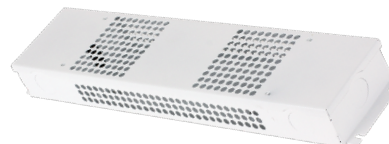
### FEATURES

- Input Voltage Range: 100-130V
- Frequency Range: 47~63HZ
- Power Factor (avg.):  $\geq 0.65$
- Full Load Efficiency (avg.):  $> 83\%$  (12V DC)
- Zero minimum load, Max load 100%
- Smooth dimming range down to 5%
- Short circuit, over current protection, and autorecovery
- Air-cooled for longer lifetime operation
- Suitable for indoor applications / dry location
- Compatible with ELV, MLV and trailing edge TRIAC dimmers
- Optional wiring junction box enclosure available, built in for 96W and above models.
- ETL listed US/CA
- Ambient Temp.  $-40\sim+60^{\circ}\text{C}$  /  $-40\sim+140^{\circ}\text{F}$
- Operating Temp.  $40\sim+80^{\circ}\text{C}$ ,  $-40\sim176^{\circ}\text{F}$
- Working Humidity 20~90% RH non-condensing
- Class 2

Item#	Max Output Power	Max Output Current	Dimensions
TBD.PSDT-20W-12V	20W	2.083A	6.1"L x 2.12"W x 0.79"H
TBD.PSDT-20W-24V	20W	1.042A	6.1"L x 2.12"W x 0.79"H
TBD.PSDT-40W-12V	40W	4.17A	7"L x 2.4"W x 0.95"H
TBD.PSDT-40W-24V	40W	2.083A	7"L x 2.4"W x 0.95"H
TBD.PSDT-60W-12V	60W	5A	7"L x 2.4"W x 0.95"H
TBD.PSDT-60W-24V	60W	2.083A	7"L x 2.4"W x 0.95"H

### OPTIONAL ACCESSORY

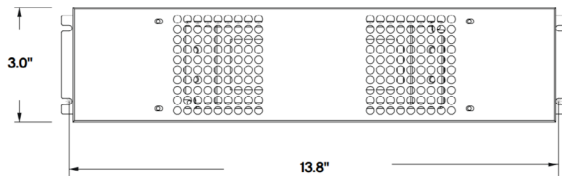
TBD.PSDT-JB1-WH - Wiring Junction Box Enclosure  
(13.8"L x 3"W x 1"H)



# LED POWER SUPPLIES

TBD.PSDT (96W - 24V)

REMOTE TRIAC DIMMING DRIVER



TBD.PSDT for use with DC LED systems, using TRIAC, forward-phase, ELV style dimmers. Derated to allow for maximum capacity loads, and integrated technology ensures over-current protection. Suitable for residential or commercial indoor use.

## FEATURES

- Max Output Power: 96W
- Max Output Current: 4A
- Input Voltage Range: 100-130V
- Frequency Range: 47~63HZ
- Power Factor (avg.):  $\geq 0.7/110V$
- Full Load Efficiency (avg.):  $>85\%$
- Zero minimum load, Max load 100%
- Smooth dimming range down to 5%
- Short circuit, and over current protection, and autorecovery
- Air-cooled for longer lifetime operation
- Suitable for indoor applications / dry location
- Compatible with ELV, MLV and trailing edge TRIAC dimmers
- Optional wiring junction box enclosure available, built in for 96W and above models.
- ETL listed US/CA
- Ambient Temp.  $-40\sim+60^{\circ}C$  /  $-40\sim+140^{\circ}F$
- Operating Temp.  $40\sim+80^{\circ}C$ ,  $-40\sim176^{\circ}F$
- Class 2

