

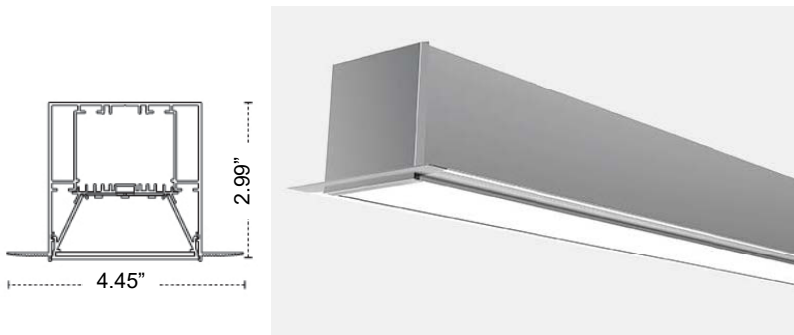
PROJECT NAME:	DATE:	TYPE:
SPECIFIER:	PREPARED BY:	
PART NO.:		



PROFILE CHANNEL SERIES

TBD.E76R

FLANGED PROFILE CHANNEL



Flanged profile channel designed for recessed LED linear custom applications. Accessories provide for unlimited geometric designs with T-shapes, L-shapes, X-shapes.

FEATURES

- Ideal for custom installations
- Flanged for recessed mount
- Frosted Lens Diffuser Included Per Channel
- Two End Caps Included Per Channel
- Anodized Silver Finish
- Available 49.25" and 98.5"
- Field Cuttable
- Compatible with LED Strips up to 1.36" Wide
- Powder Coat Custom Finishes Available
- Accessories Sold Separately
- Remote Power Supplies Sold Separately, Available in 120V and 277V

ACCESSORIES



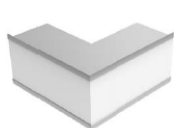
TBD.E76R-49-LN
TBD.E76R-98-LN
(Included Per Channel)



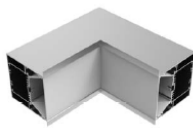
TBD.E76R-RE
N-type Bracket
(Sold Separately)



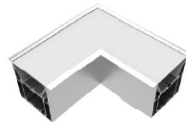
TBD.E76R-EC
End Caps
(2 included per Channel)



TBD.E76R-L90W
L connector
(OUTSIDE)
(Sold Separately)



TBD.E76R-L90N
L connector
(INSIDE)
(Sold Separately)



TBD.E76R-L90
L connector
(SIDE)
(Sold Separately)



TBD.E76R-T90
T-connector
(Sold Separately)



TBD.E76R-X90
X-connector
(Sold Separately)



TBD.E76R-SC
Seamless connector
(Sold Separately)

ORDERING GUIDE

TBD.E76R

Channel

LENGTH
49 - 49.25"
98 - 98.5"

LENS
F - Frosted