

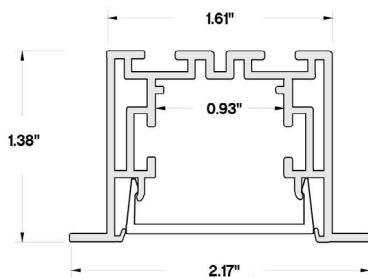
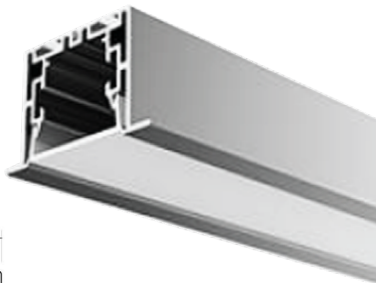
PROJECT NAME:	DATE:	TYPE:
SPECIFIER:	PREPARED BY:	
PART NO.:		



# PROFILE CHANNEL SERIES

## TBD.E35R

### FLANGED PROFILE CHANNEL

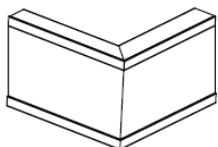


Flanged profile channel designed for recessed LED linear custom applications. Accessories provide for unlimited geometric designs with T-shapes, L-shapes, X-shapes for wall-to-wall, wall-to-ceiling applications.

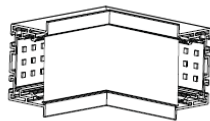
### FEATURES

- Ideal for Custom Installations
- Flanged for Recessed Mount
- Frosted Lens Diffuser included per channel
- Two End Caps and Two N-Brackets included per channel
- Anodized Silver Finish
- Available 49.25" and 98.5"
- Field Cuttable
- Compatible with LED Strips up to 0.93" Wide
- Powder Coat Custom Finishes Available
- Accessories Sold Separately

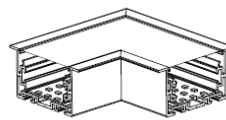
## ACCESSORIES



**TBD.E35R-90W** Outside L



**TBD.E35R-90N** Inside L



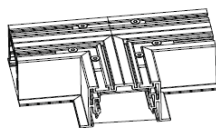
**TBD.E35R-90** Side L



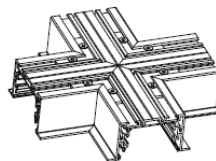
**TBD.E35R-EC**  
End Caps  
(2 Included)



**TBD.E35R-RE**  
N-Type Bracket  
(2 Included)



**TBD.E35R-T90** T-Connector

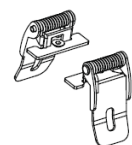


**TBD.E35R-X90** X-Connector

Connectors (Sold Separately)



**TBD.E35R-SC**  
Seamless Connector  
(Sold Separately)



**TBD.E35R-RB**  
Butterfly Clip  
(Sold Separately)

## ORDERING GUIDE

**TBD.E35R**

### LENGTH

49 - 49.25"  
98 - 98.5"

### LENS

F - Frosted

PROJECT NAME:	DATE:	TYPE:
SPECIFIER:	PREPARED BY:	
PART NO.:		



# PROFILE CHANNEL SERIES

TBD.E35R

FLANGED PROFILE CHANNEL

## MOUNTING OPTIONS

### N-TYPE CLIP



### BUTTERFLY CLIP

