

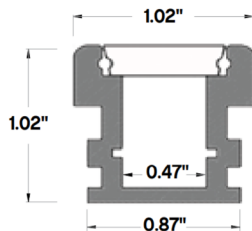
PROJECT NAME:	DATE:	TYPE:
SPECIFIER:	PREPARED BY:	
PART NO.:		



PROFILE CHANNEL SERIES

TBD.E26

IN-GROUND FLANGELESS PROFILE CHANNEL



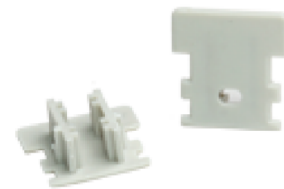
A durable in-ground aluminum channel designed for pavement, sidewalk, and driveway applications. Included polycarbonate frosted diffuser is certified for all weather conditions, UV resistant, and can withstand a maximum load of 5000 lbs.

FEATURES

- In-Ground
- 160° Beam Spread
- Maximum Load: 5000 lbs.
- Finish: Anodized Silver
- Lens: Frosted
- Requires silicone to achieve IP67 waterproof rating
- Custom cut lengths available



ACCESSORIES



TBD.E26-EC
End Caps
(2 Included)

ORDERING GUIDE

TBD.E26

LENGTH
48"
98"

LENS
F - Frosted